



## AT A GLANCE

**Launched:** 1999

**Names in Records:** 7.2 billion

**Registered Users:** More than 1 million

**Names in Family Tree:** 1.2 billion

A nonprofit organization, FamilySearch is owned and operated by the Church of Jesus Christ of Latter-day Saints.

FamilySearch Family Tree Search Memories Indexing Activities

Records Images Family Tree Genealogies Catalog Books Wiki

### Search Historical Records

Search for a deceased ancestor in historical records to uncover vital information from their life.

#### Deceased Ancestor's Information

First Names  Last Names

#### Search with a life event:

[Birth](#) | [Marriage](#) | [Residence](#) | [Death](#) | [Any](#)

Birthplace  Birth Year (Range)  From  To

#### Search with a relationship:

[Spouse](#) | [Father](#) | [Mother](#) | [Other Person](#)

#### Restrict records by:


[Location](#) | [Type](#) | [Batch Number](#) | [Film Number](#)

Country  State or Province

Match all terms exactly

### Research By Location

Click an area of the world to start researching in a specific location.



### Find a Collection

Researching within a specific collection? Find it here.

Collection Title

[Browse All Published Collections](#)

FamilySearch home page

# Major Record Collections

## US CENSUSES

- 1790–1940 federal censuses
- Various state censuses

## US VITAL RECORDS

- Birth, marriage and death indexes for various cities and states, including New York, Texas, Ohio and California
- Social Security Death Index
- Find A Grave Index
- BillionGraves Index

## US PROBATES AND WILLS

- Various state records
- Freedman's Bank records

## US MILITARY RECORDS

- WWI and WWII draft registration cards
- WWII enlistment records
- Civil War service and pension records
- Marine Corps muster rolls
- Revolutionary War pension and service records

## CANADIAN RECORDS

- Censuses
- Passenger lists

## UK RECORDS

- Birth, marriage and death register index
- 1841–1911 Censuses
- WWI service records

## IRISH RECORDS

- Civil registration indexes
- Valuation Office books
- Tithe Applotment Books

## GERMAN RECORDS

- Births, baptisms, marriages and deaths
- Germans to America Index (1850–1897)

## MEXICAN RECORDS

- Baptisms, marriages and deaths
- 1930 census records

## IMMIGRATION RECORDS

- New York, Boston, Baltimore, Philadelphia, Los Angeles and New Orleans passenger lists
- Border-crossing records from Canada and Mexico
- US passport applications
- Naturalization records and indexes for various states

## NEWSPAPERS

- Obituaries from GenealogyBank and various publications

## OTHER RECORDS

- International Genealogical Index (IGI)
- United States Public Records, 1970–2009

# THE FAMILYSEARCH FAMILY TREE

With more than 1.2 billion names, the **FamilySearch Family Tree** is an excellent resource for genealogists around the world. Unlike other online tree websites wherein each user has his own family tree (such as Ancestry.com <www.ancestry.com> and MyHeritage <www.myheritage.com>), FamilySearch combines its users' family "trees" into just one global Family Tree.

**Remember:**  
Any user can edit and view profiles of deceased individuals on the FamilySearch Family Tree. Set up notifications to keep track of changes others have made.

The screenshot displays a family tree in the 'Portrait' view. At the top, a dropdown menu is set to 'Portrait'. The tree shows a couple, Augustine Washington (1694-1743) and Mary Ball (1706-1789), with a purple icon on Mary's profile. Below them are George Washington (1732-1799) and Martha Dandridge (1731-1802). To the right, John Dandridge (1700-1756) and Frances Orla... Jones (1710-1785) are shown. The bottom row features several children: Martha Parke Custis (1753-1773), John Parke Custis (1754-1781), Eleanor Calvert (1754-1811), Lawrence B Lewis (1767-1839), Eleanor Parke Custis (1779-1852), George Was... Custis (1781-1857), and Mary Lee Fitzhugh (1788-1853). A blue icon is on George's profile. A 'Portrait' dropdown is on the left, and an 'Options' dropdown is on the right. A 'Portrait' label is also present in the top left corner.

FamilySearch offers different family tree views you can select from this drop-down, including Portrait (pictured), Descendancy and Fan Chart.

Purple icons indicate Research Suggestions: notes from FamilySearch about other possible relatives or potential data errors (such as missing vital events).

Blue icons indicate Record Hints (matches in indexed digital records).



# President George Washington

22 February 1732 – 14 December 1799 • KNDX-MKG

View Tree Follow View My

Details Time Line Sources 51 Collaborate 3 Memories 23

**Read Only**  
This person's record is read-only. No additions or changes can be made.

## Life Sketch

George Washington life sketch:  
"George Washington (1732-99) was commander in chief of the Continental Army during the American Revolutionary War (1775-83) and served two terms ... [More](#)

## Vitals

Detail View  
**Name** • 47 Sources • [View](#)  
President George Washington  
**Sex** • 30 Sources • [View](#)  
Male  
**Birth** • 30 Sources • [View](#)  
22 February 1732  
Westmoreland, Virginia, British Colonial America  
**Christening** • 0 Sources • [View](#)  
5 April 1732

## Research Help

### Search Records

- FamilySearch
- ancestry
- findmypast
- MyHeritage
- Geneanet

### Latest Changes

### Tools

- Possible Duplicates 0
- Find Similar People

Only deceased people (i.e., profiles that have a death date) are public on FamilySearch.

This seven-character ID is unique to each person, and you can search the Family Tree using it.

Switch to a family tree view, showing the person and his relatives.

Under Memories, you can upload photos, documents, stories and even audio recordings.

The Person page indicates details about the person's life, from birth and death data to information about other life events (such as residence and emigration). Most profiles will have a blue Edit button next to each fact; George Washington's profile doesn't, because it is read-only.

With one click, search for this person in digitized records at FamilySearch and other sites.

# Using the Main Search Form

The main search form <[www.familysearch.org/search](http://www.familysearch.org/search)> allows you to search all of FamilySearch's indexed records at once. This can be a blessing and a curse. With too broad of a search, you'll have to sort through millions of results (many of them irrelevant). But with too narrow of a search, you'll risk missing important records. With the right fields filled in, you can deftly navigate FamilySearch's more than 7 billion indexed record results.

FamilySearch is totally, 100% free. However, the site has additional features only for LDS Church members.

The search form has separate fields for first and last names.

To limit your search to only results that match a field exactly (e.g., that have the same spelling), click the box behind it.

Year ranges give you some coverage if you can only guess when an ancestor's life event took place.

You can search by life events, notably birth and death dates and places. Remember that adding more life events to your search will result in fewer record matches. Any records that don't include this information will be omitted.

Add a relationship to your search if you're looking for records that include multiple family members.

**Search Historical Records**  
Search for a deceased ancestor in historical records to uncover vital information from their life.

**Deceased Ancestor's Information**

**Name**

First Names:   Last Names:

**Search with a life event:**  
Birth | Marriage | Residence | Death | Any

Birthplace:   Birth Year (Range):

**Search with a relationship:**  
Spouse | Father | Mother | Other Person

Father's First Names:   Father's Last Names:

**Restrict records by:**  
Location | Type | Batch Number | Film Number

Country:  State or Province:

### Search with a life event:

Birth | Marriage | Residence | Death | Any

Birthplace

England

Birth Year (Range)

1788

1792

### Search with a relationship:

Spouse | Father | Mother | Other Person

Father's First Names

George

Father's Last Names

### Restrict records by:

Location | Type | Batch Number | Film Number

Country

State or Province

Match all terms exactly

Search

Reset

You can search by life events, notably birth and death dates and places. Remember that adding more life events to your search will result in fewer record matches. Any records that don't include this information will be omitted.

With one click, you can ask FamilySearch to show only results that exactly match all the fields you entered above. Use this feature sparingly (particularly when searching with multiple fields), since this will substantially limit your results.

Add a relationship to your search if you're looking for records that include multiple family members.

FamilySearch allows you to search only for particular groups of records, useful in specific cases:

- **Location:** If you know the record you're looking for comes from a specific country or state/province
- **Type:** If you want to limit your search to a specific kind of record, such as censuses or marriage records
- **Batch or Film Number:** If you have these details from when the records were originally microfilmed (such as by browsing digitized images or viewing microfilms in person at archives or Family History Centers)

# Researching by Location

Drill down to record collections from specific places. From the main search page, choose a region from the clickable world map, then select a country or (for the United States and Canada) state/province.

You'll be directed to a landing page (see right) with a form that searches just records from that location, plus (if available) information about current indexing projects and links to relevant Learning Center courses and FamilySearch Research Wiki pages.

**California** Welcome to our California research page. We've brought together tools to help you with your research in California.

### Learning Courses

We have 7 learning courses to help you do your family history research in California

- United States Research: Pacific States Region - California 8:28
- United States Research: Pacific States Region - History and Background 6:33

[See all California courses in Learning Center](#)

### Indexed Historical Records

Search collections of records for documents about your ancestors. You can filter which collections you would like to search within.

[Enter your ancestor's information and select "Search" below](#)

#### Deceased Ancestor's Information

**Name**

First Names  Last Names

**Search with a life event:**

Birth | [Marriage](#) | [Residence](#) | [Death](#) | [Any](#)

Birthplace  Birth Year (Range)  From  To

**Search with a relationship:**

[Spouse](#) | [Father](#) | [Mother](#) | [Other Person](#)

**Restrict records by:**

Location | [Type](#) | [Batch Number](#) | [Film Number](#)

Country  State or Province



# Searching Individual Collections

## Filter by Collection Title

 Show only collections with images

## Place

- ▶ Africa 42
- ▶ Asia & Middle East 58
- ▶ Australia & New Zealand 44
- ▶ Canada 103
- ▶ Caribbean and Central America 77
- ▶ Continental Europe 623
- ▶ Mexico 66
- ▶ Other 8
- ▶ Pacific Islands 18
- ▶ South America 128
- ▶ United Kingdom and Ireland 175
- ▶ United States of America 1,514




## Date

Pre 1700 509

## Historical Record Collections

Showing 1-100 of 2,856 Collections. [Show All](#)

[Previous](#)[Next](#)

Title ▲	Records	Last Updated
<a href="#">Alabama Births and Christenings, 1881-1930</a>	165,607	Mar 17, 2020
 <a href="#">Alabama Civil War Service Records of Confederate Soldiers, 1861-1865</a>	1,213,534	Apr 20, 2012
 <a href="#">Alabama Civil War Service Records of Union Soldiers, 1861-1865</a>	31,582	Apr 20, 2012
 <a href="#">Alabama County Marriages, 1809-1950</a>	4,915,855	Jan 15, 2020
<a href="#">Alabama County Marriages, 1818-1936</a>	6,764	Jan 17, 2020
<a href="#">Alabama Deaths and Burials, 1881-1952</a>	75,202	Jan 19, 2020
 <a href="#">Alabama Deaths, 1908-1974</a>	1,875,674	Jul 28, 2020
 <a href="#">Alabama Estate Files, 1830-1976</a>	25,296	Dec 11, 2013
<a href="#">Alabama Marriages, 1816-1957</a>	758,144	Mar 25, 2020
 <a href="#">Alabama Probate Records, 1809-1985</a>	<a href="#">Browse Images</a>	Feb 19, 2013
<a href="#">Alabama State Census, 1855</a>	34,978	Oct 9, 2018

# VIEWING SEARCH RESULTS

Change your search terms by adding/removing options or modifying fields, then click Update.

Click a name to open a new window that has details about the matching record. You'll also have the option of adding the record to a Family Tree profile or (for record images) downloading it.

**Refine your search:**

**Deceased Ancestor's Information**

Name

First Names

John

Last Names

Smith

**Search with a life event:**

Birthplace

England

Birth Year (Range)

1788 1792

**Marriage**

**Residence**

**Death**

**Any**

**Search with a relationship:**

**Spouse**

**Father**

Father's First Names

George

Father's Last Names

**Records** **Collections**

**Search Results from Historical Records** [Filter by collections](#)

1-20 of 555,771 Results for Name: **John Smith** Birthplace: **England** Birth Year (Range): **1788 - 1792** Father name: **George**

Number of results to show: 20 50 100 [Export Results 1-20](#)

Name	Events	Relationships	View
<b>John James Smith</b> Principal England Births and Christenings, 1538-1975	christening: 22 August 1790 London, England	father: George Smith mother: Frances	
<b>John Smith</b> Principal England Births and Christenings, 1538-1975	christening: 25 Decemb er 1790 Sutton on the Hill, Derbyshire, England	father: George Smith mother: Mary	
<b>John Smith</b> Principal England Births and Christenings, 1538-1975	christening: 16 May 1790 Aycliffe, Durham, England	father: George Smith	
<b>John Smith</b> Principal England Births and Christenings, 1538-1975	christening: 8 March 1789		

Scroll down for filtering options, including collection, record type, and birthplace.

The icons under View indicate how else you're able to view a record match:

- Tree:** View what profile the record is linked to in the Family Tree.
- Document:** View record details.
- Camera:** View the digitized record image.

Add the record to your quick-reference

birthplace.

# Viewing Record Images

Add the record to your quick-reference Source Box or attach it to a profile in the Family Tree.

View other images in this record set, either by entering a number or "paging" forward or backward using the arrows.

Zoom in (+) or out (-), or view the image in full screen.

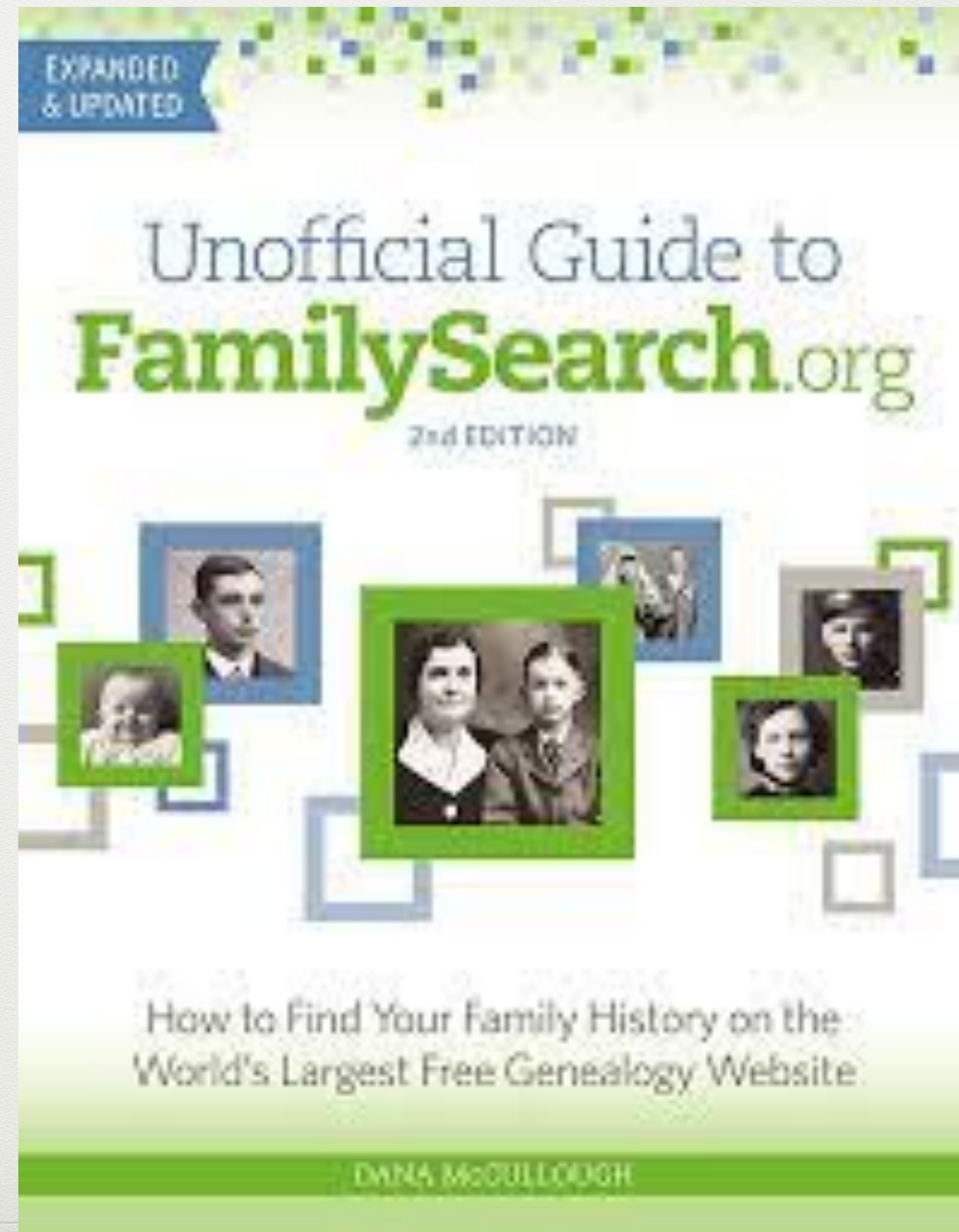
Print the image or download it to your computer. Under Tools, you can rotate the image or adjust it to make it easier to read (such as by inverting colors).

Name	Event Year	Residence Place	District Number	Address	Gender	Marital Status
John William Smit	1935	93 Winsor Ave, Johnston, Providence, Rhode Island		93 Winsor Ave	Male	Single

If an image is indexed, it will be annotated with that text. Images that include multiple indexed records (such as censuses) will highlight each part of the index on the image.

# Browsing Records: Step by Step

1. Choose a collection.
2. Select a volume from a drill-down option.
3. Start with a page, then move forward and backward.
4. Save the record by downloading it to your Source Box, attach it to your family tree and save it to your desktop. You can also print it.



# USING THE FAMILYSEARCH RESEARCH WIKI

The **FamilySearch Research Wiki** <[www.familysearch.org/wiki/en/Main\\_Page](http://www.familysearch.org/wiki/en/Main_Page)> is an excellent resource to learn more about the ancestors you're researching, as well as the places and time periods in which they lived. With more than 90,000 articles, the Wiki provides research advice and tips to help you move your research forward.

You can search the Wiki's articles by keyword, or you can browse articles by country <[www.familysearch.org/wiki/en/Online\\_Genealogy\\_Records\\_by\\_Location](http://www.familysearch.org/wiki/en/Online_Genealogy_Records_by_Location)> or by topic <[www.familysearch.org/wiki/en/Category:Articles\\_by\\_Topic](http://www.familysearch.org/wiki/en/Category:Articles_by_Topic)>.

The page for Ohio (below), for example, contains links to subpages about specific kinds of records, plus a clickable map that allows you to view county-level wiki entries. Keep scrolling down the page for links to additional Ohio resources, such as Cyndi's List <[www.cyndislist.com](http://www.cyndislist.com)> and state-specific collections such as Ohio Memory <[www.ohiomemory.org](http://www.ohiomemory.org)>.

Search by keyword for locations, record types and more.

The screenshot shows the top of a wiki page for "Ohio, United States Genealogy". At the top right, there are navigation buttons: "Page", "Talk", "Read", "View source", "View history", and a search bar labeled "Search FamilySearch Wiki". Below the navigation is the title "Ohio, United States Genealogy" and a breadcrumb trail "United States → Ohio". A descriptive sentence reads: "Guide to **Ohio ancestry, family history, and genealogy** birth records, marriage records, death records, census records, family history, and military records." Below this is a note: "This article is about the U.S. state. For other uses, see *Ohio (disambiguation)*." There are two main sections: "Ohio Information" with an "[edit source]" link, and "Getting Started" with an "[edit source]" link. A yellow callout box points to the "Getting Started" section with the text "Curated guides walk you step by step through research." To the right, there is a section titled "Ohio Wiki Topics" featuring a large image of the Ohio state flag.

Curated guides walk you step by step through research.

## Ohio Wiki Topics



# Ohio, United States Genealogy

[United States](#) → [Ohio](#)

Guide to **Ohio ancestry, family history, and genealogy** birth records, marriage records, death records, census records, family history, and military records.

*This article is about the U.S. state. For other uses, see [Ohio \(disambiguation\)](#).*

## Ohio Information [\[edit source\]](#)

Ohio is a state in the Midwestern portion of the United States. Ohio became a state on 1 March 1803, having been created from the Northwest Territory, and it's capital is Columbus. It is divided into 88 counties. <sup>[1]</sup>

## Getting Started [\[edit source\]](#)

### Getting Started with Ohio Research

Links to articles on getting started with Ohio research.

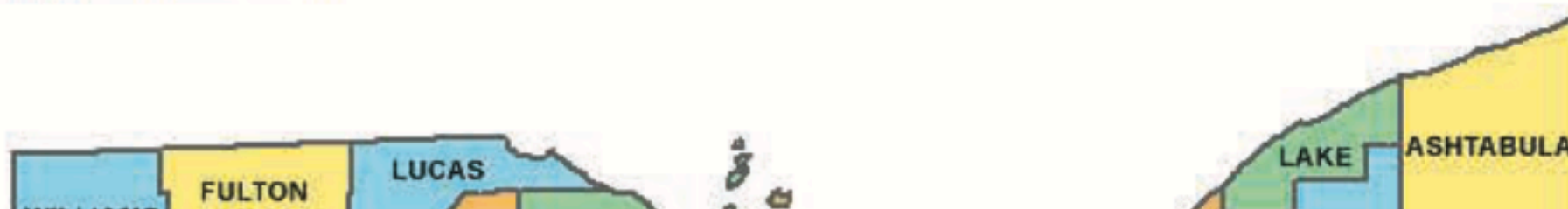
- [Guided Research](#)
- [Step-by-Step Ohio Research, 1880-Present](#)
- [How to Find Birth Records](#)
- [How to Find Marriage Records](#)
- [How to Find Death Records](#)
- [Research Strategies](#)

[Ohio Online Genealogy Records](#)

[Ask the Community](#)

## Ohio Clickable Map [\[edit source\]](#)

Many genealogy records are kept on the county level in the United States. Click on a county below to go to the county Wiki article listing more information.



Curated guides walk you step by step through research.

### Ohio Research Tools

Links to articles and websites that assist in Ohio research.

- [Ohio Record Finder](#)
- [Boundary Changes for Ohio Counties](#)
- [Ohio Archives and Libraries](#)
- [OHGenWeb](#)
- [Geographical Names Information System](#) - U.S. gazetteer of places, cemeteries and post offices in Ohio.

Connect to subarticles about the

## Ohio Wiki Topics



### Beginning Research

- [Guided Research](#)
- [Research Strategies](#)
- [Record Finder](#)

### Record Types

- [Bible Records](#)
- [Cemeteries](#)
- [Census](#)
- [Church Records](#)
- [Colonial Records](#)
- [Court Records](#)
- [Directories](#)
- [Emigration & Immigration](#)
- [Genealogies](#)
- [Land and Property](#)
- [Military Records](#)
- [Naturalization and Citizenship](#)
- [Newspapers](#)
- [Online Records](#)
- [Periodicals](#)
- [Probate Records](#)
- [Taxation](#)
- [Vital Records](#)
- [Voter Records](#)

## Ohio Clickable Map [\[ edit source \]](#)

Many genealogy records are kept on the county level in the United States. Click on a county below to go to the county Wiki article listing more information.



Connect to subarticles about the area's history and geography, plus prominent record types, people groups and societies/organizations in the region.

Drill down to more-specific jurisdictions, such as counties within a state, with a clickable map.

- Directories
- Emigration & Immigration
- Genealogies
- Online Records
- Periodicals
- Probate Records
- Taxation
- Vital Records
- Voter Records

### Ohio Background

- Biography
- Gazetteers
- History
- Maps
- Migration
- For Further Reading

### Cultural Groups

- African Americans
- Indigenous Peoples
- Cultural Groups
- Swedish Americans

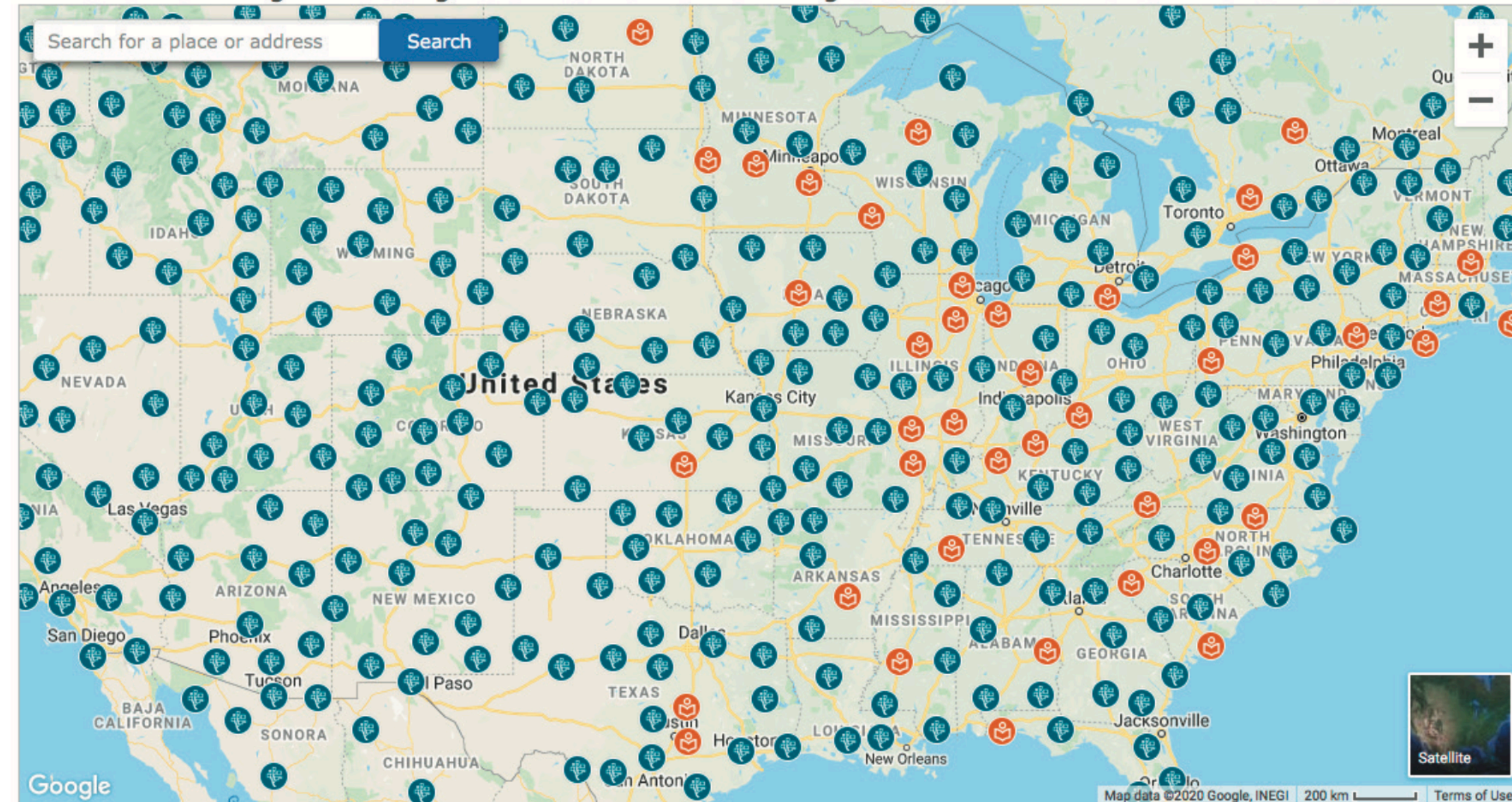
### Local Research Resources

- Archives and Libraries
- Societies
- Family History Centers<sup>Ⓔ</sup>

### Moderator

The FamilySearch moderator for Ohio is familyjournals

## Find a Family History Center and FamilySearch Affiliate Libraries



**Family History Centers (FHCs)** are local branches of Salt Lake City's Family History Library. At an FHC, you can find a bevy of records and resources (often about and from the local area), as well as trained staff who can help you find and interpret documents. FHCs—as well as FamilySearch Affiliate Libraries—also have special access to FamilySearch.org, including more digitized records than are available to individual users.

As of 2020, FamilySearch operates more than 5,000 FHCs around the world. Find the location nearest you by typing in an address at <[www.familysearch.org/help/fhcenters/locations](http://www.familysearch.org/help/fhcenters/locations)>. You can also browse the map there; blue dots indicate FHCs, while orange dots indicate affiliate libraries.

**Family Search Center located next in the back of the LDS Church,  
2745 Eastern Ave. Sacramento, CA.**

<https://www.google.com/search?client=safari&rls=en&q=familysearch+center+sacramento&ie=UTF-8&oe=UTF-8>



- **Home:** [www.familysearch.org](http://www.familysearch.org)
- **Records Search:** [www.familysearch.org/search](http://www.familysearch.org/search)
- **Digital Library:** [www.familysearch.org/library/books](http://www.familysearch.org/library/books)
- **Help Center:** [www.familysearch.org/help/helpcenter](http://www.familysearch.org/help/helpcenter)
- **Learning Center:** <https://www.familysearch.org/help/helpcenter/landing>
- **Memories:** [www.familysearch.org/photos](http://www.familysearch.org/photos)
- **Research Wiki:** [www.familysearch.org/wiki/en/Main\\_Page](http://www.familysearch.org/wiki/en/Main_Page)
- **RootsTech:** [www.rootstech.org](http://www.rootstech.org)
- **FamilySearch on YouTube:** <https://www.youtube.com/channel/UC-9GZ7QHKOmLS0APnfz2g1Q>
- **FamilySearch on Facebook:** <https://www.facebook.com/search/top/?q=familysearch>
- **ThoughtCo:FamilySearch Historical Records:** <https://www.thoughtco.com/familysearch-historical-records-1421962>
- **Family Tree Magazine:** <https://familytreemagazine.com/familysearch/>
- **Cyndi's List: Family Search:** <https://cyndislist.com/familysearch>

# Family Search Videos

- **Starting Your Family Tree On Family Search:** <https://www.youtube.com/watch?v=JfRgFUh7Z70>
- **Beginner Guide to Family Search:** <https://www.youtube.com/watch?v=n27-ZbQr34I>
- **Article on Video Tutorials From Family Search With Links:** <https://www.familysearch.org/en/blog/video-tutorials-how-to-use-familysearch>

## Building a Bridge to Your Ancestors



on  
**FamilySearch.org**

Maintainingmotherhood.com